

CALIFORNIA TUBEROUS BEGONIAS

(SIZE 2 1/2" UP)

We now have a direct connection in California for tubers of the Super Giant strain which is said to be the best in tuberous begonias. The tubers are larger than Belgian grown and the blooms are up to 6" in diameter. Colors range from pure white through yellow, orange, apricot, terra cotta, pink, and reds, to American Beauty.

Tuberous begonias make superb greenhouse pot plants, and can be transferred to shady places outdoors for bloom from June to September. As house plants they soon drop their petals and are not recommended. Cultural directions with shipment.

Shipped in mixed colors early in March. As we must buy against order, please place your order early to be sure to be included.

Qty Type MINIMUM SHIPMENT 8 TUBERS

- ... CAMELLIA—double camellia flowered, and very large.
- ... CARNATION—large double blooms; petals frilled and serrated resembling carnations.
- ... PICOTEE—double camellia flowered but with two colors to each bloom.
- ... LLOYDII—the hanging basket type. Double flowers, often hundreds of bloom to a bulb.

...total number of tubers, 2 1/2" up, @ .50 each.....\$.....

Trade allowance of 30% in Free Goods (3 free with 10) on orders for \$15. or more.

For bedding, we can supply all of same color and type in lots of 50 or more. Order 40 and, with Free Goods, get 52.

If the supply of top grade plants of a variety becomes exhausted, we will substitute the nearest equal, or probably better, variety.

"Grow Extra Dollars—At Home"

The author, Ray Reynolds, has built a profitable sideline business growing plants at home for wholesale to local retail outlets, while commuting to his regular city job.

From practical and successful experience he tells home gardeners how to procure or make the equipment needed, what to grow, how to plan production, how to price, where and how to sell... in short, exactly how to have a profitable hobby and your own business.

"Serves as an invaluable guide as it deals with information not found in the typical garden books."—Chicago Tribune

"Covers both the business principles involved and the many operating details."—Flower Grower Magazine

"There is much in this small volume to make it valuable to anyone."—Organic Gardening Magazine

A CONCISE WORKING MANUAL, 52 PAGES, ILLUSTRATED

\$2.00 postpaid

Recap. of your order:

Please return this catalog showing your order, and bearing your name and address. We will send you a new catalog when acknowledging your order.

AFRICAN VIOLETS—Minimum 3.50	\$.....
BEGONIA TUBERS—Minimum 4.00	\$.....
BOOKS	\$.....
CANNAS—Minimum 3.00	\$.....
CHRISTMAS CACTUS alone, Minimum 3.00	\$.....
CHRYSANTHEMUMS—Minimum 3.50	\$.....
EPIPHYLLUM—Minimum 4.00	\$.....
FUCHSIAS—Minimum 3.50	\$.....
GERANIUMS—Minimum 4.00	\$.....
GLADIOLUS—Minimum 2.75	\$.....
"GROW EXTRA DOLLARS—AT HOME"	\$.....
LADY WASHINGTONS—Minimum 4.20	\$.....
ORCHIDS	\$.....
PEONY, HERBACEOUS—Minimum 5.00	\$.....
PEONY, TREE	\$.....
SOIL HEATING CABLE SET	\$.....
STRAWBERRY PLANTS—Minimum 4.75	\$.....

Remittance Attached

(no COD'S please)

Total of Order \$.....

We Pay The Freight On All Shipments

You know your full cost now. Living plants shipped via parcel post "Special Handling" with the speed of first class mail.

We guarantee delivery of good material in good condition. If a shipment suffers loss or damage in transit, please let us know at once and the loss will be replaced.

Diverse Books of Especial Value To Garden and Greenhouse Hobbyists

"New Garden Encyclopedia" by Wm. H. Wise & Co. Your basic reference book.	5.00.....\$.....
"Commercial Flower Forcing" by Laurie & Kiplinger For amateur and professional.	5.00.....\$.....
"Greenhouses, Construction & Equipment" by Wright If you intend to build one.	3.00.....\$.....
"Greenhouse Gardening for Everyone" by Chabot For the hobby greenhouse.	4.00.....\$.....
	Total \$.....

Printed by Arthur D. Holmes, 116-10 Myrtle Avenue, Richmond Hill 18, N. Y.

REYNOLDS GARDENS

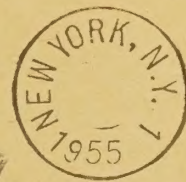
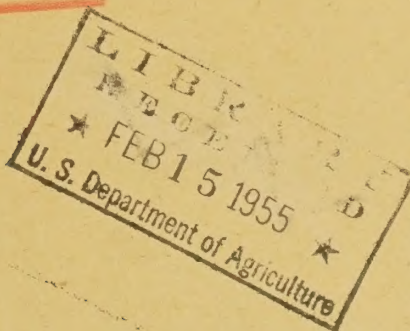
"One or More of Each Variety"
Armonk, New York

You, as a flower hobbyist or retail grower, may well have difficulty in buying desired varieties at retail, or must buy too many of one kind at wholesale, or are unable to find some kinds at any price.

Meanwhile, specialists are developing and improving the plant of their choice. In contrast to purely commercial growers, they have variety rather than volume. This, without commercial overhead cost, makes possible our unique feature of "one or more of each variety," at fair prices.

This service provides an outlet for specialist growers and a convenient, economical source of supply for you.

Form 3547 Requested.
Return Postage Guaranteed.



Library, U.S. Dept of
Agriculture,
Washington 25, D.C.

GERANIUMS

(FROM POTS)

These are not the geraniums generally known. (Anyone can have the several kinds which, as fast growers and good shippers, are mass produced commercially.) These are the geraniums most people never see. Yet, next to orchids, they are the most popular greenhouse subject.

Geraniums, or pelargoniums if you will, have nearly everything. The foliage is handsome, the blooms brilliant. They are practically immune to insect pests. They thrive as pot plants. They fill the hot, dry, sunny spots in the garden where they will bloom all summer.

These are singles, doubles, and dwarfs; in odd colors, bi-colors, and tri-colored pansy faces; leaves ivy, fancy, and multi-colored. All are pungent, and a few bruised leaves of scented varieties add a whiff of spicy fragrance to linen closets and such. Shipped until late June. Minimum shipment \$4.00.

Qty FANCY FLOWERED VARIETIES

-ALL AGLOW—double; scarlet with white center.
-APPLEBLOSSOM ROSEBUD—very double; white with rose-red edging, green center and green stripes.
-BARNEY—double; dark red blooms, dwarfish plant.
-CHERRY VALLEY—double; brilliant cherry red.
-PINK BIRDS EGG—double; lavender pink with dark pink spots.
-SPRINGTIME—pansy type; bright pink and white with wavy petals, blotched.
-ENCHANTRESS—double; soft pink.
-FORTUNE—double; white with rose-red margin.
-LADY JANE—double; clear scarlet.
-MADONNA—fully double, white.
-MARQUIS de MONTMART—double; rosy-purple. Nearest to blue.
-MRS. LAYAL—pansy type; white, purple and black.
-PICARDY—double, medium pink.
-PINK ROSEBUD—very double; rose-red on inside, pink on outside of petals.
-PRINCE OF ORANGE—double; bright salmon orange.
-SPRINGFIELD VIOLET—double; purple, scarlet, and orange.

FANCY LEAFED VARIETIES

-CRYSTAL PALACE GEM—pure gold leaf with light green center blotch.
-HAPPY THOUGHTS—green edge, brown zone, yellow center. Single red bloom.
-JUBILEE—wide chocolate zone on green-gold leaf. Single salmon flowers.
-SILVER RUBY—emerald leaf with narrow white edge; double ruby-red blooms.
-SKIES OF ITALY—green leaf edged yellow, strong brown zone, center splashed red. Small single scarlet flowers.
-WILHELM LANGGUTH—white and silvery green leaf. Double rose-red bloom.

IVY LEAFED VARIETIES

-CLIFF HOUSE—double flowers in soft lavender pink.
-IRMA—double salmon-coral flowers with white center. Good basket type.
-LAVENDER ROSE—double lavender blooms; foliage small, compact and scented.
-SALMON ENCHANTRESS—double salmon flowers with rose stripe.
-WILLY—very double dark red flowers.

....total number of plants from 2 1/4" and 2 1/2" pots @ .50 each.....\$.....

SCENTED VARIETIES

Deeply cut, feathery foliage distinctly scented, with small but showy flowers in pink, red, lavender, and white.

SCENT BOTANICAL GROUP

-APPLE—P. Odoratissimum
-LEMON—P. Limoneum
-NUTMEG—P. Odoratissimum
-ORANGE—P. Crispum
-PEPPERMINT—P. Tomentosum
-PINE—P. Denticulatum
-ROSE—P. Graveolens

....total number of scented from 2 1/4" and 2 1/2" pots @ .35 each.....\$.....

OR one each of all 34 kinds listed above (list \$15.95) for \$14.00.....\$.....

DWARF VARIETIES FROM 2 1/2" POTS

These are fragile and we do not recommend shipments beyond Postal Zone 5 from New England (beyond Wisconsin, Tennessee, Georgia)

	Each
....EPSILON—single pink flower with phlox eye.....	1.00 \$
....SCARLET O'HARA—single, large brilliant red blooms.....	1.00
....PIXIE—single, salmon pink; small dark leaves.....	1.00
....KLEINER LIEBLING—single pink, free blooming.....	.50
....MEROPE—double; darkest red flowers.....	2.00
....METEOR—double; flaming red flowers.....	2.00
....VENUS—double; flesh pink.....	2.00
....PIGMY—double scarlet flowers in profusion.....	.50
OR one each of all 8 dwarfs (list \$10.00) for.....	8.00

Total \$.....

....CALLA LILY BEGONIAS from 2 1/2" pots.....each 1.00.....

Same grower. May be included in geranium order.

Minimum shipment on this item alone is 3 for \$3.00.

Geraniums from all groups, and calla lily begonias, may be combined to make the minimum shipment of \$4.00.

Trade allowance of 30% in Free Goods on orders for \$15.00 or more of above at "each" price.

LADY WASHINGTON GERANIUMS

(FROM 2 1/2" POTS)

Collectors' items; a fine selection of choice hybrids collected and propagated by a California specialist.

These make bushy 4" pot plants covered with bloom, resembling potted azaleas. Shipped by parcel post Special Handling until June. Cultural directions included.

MINIMUM SHIPMENT 7 PLANTS, \$4.20

Qty WHITES

-LADY HARRISON—white with unusual red veining. Large semi-double crinkled.
-NORTH STAR—white tinged palest lavender. Upper petals have black blotches surrounded by violet flush. Lower petals unmarked. Very large, frilled.
-PEARLY QUEEN—white flushed pearly pink. Upped petals have small dark red blotches surrounded by red flush. Extremely frilly flowers.
-WHITE SWAN—white. Upper petals have rose-violet blotches and veins. Frilled.

PINKS

-LADY LESLIE—LaFrance pink. Upper petals dark red blotches and veining. Large flowers with frilled edges.
-LESSARS PRIDE—clear pink. Upper petals large black blotches with scarlet flush and scarlet veins. Lower petals unmarked.
-PINK AZALEA—solid salmon-pink, unmarked. Resembles azalea.
-PEGGY CRADDOCK—light silvery-pink, feathered crimson. Refreshingly different.
-RAY KELLOGG—pale pink flushed strawberry. Upper petals veined, black blotches overlaid strawberry. Maroon spot on lower petals. White ruffled border.

ORANGES AND SALMONS

-AMANDA—reddish orange with white center. Upper petals have black blotch.
-BARCELONA—soft salmon-coral. Upper petals black blotches in salmon flush. Lower petals veined. Extremely large blooms.
-IRENE RICHEY—salmon. Upper petals dark red blotches with bronze-orange flush and veinings. Very large flowers.
-RHAPSODY—salmon flushed pink. Upper petals crimson shading to pink edge. Lower petals veined red with light center. Wavy petals.
-SUN TAN—a new orange, overlaid bronze. All petals have darker blotches.

REDS

-CONSPICUOUS—oxblood red. Upper petals waved, edged with black hairline, black veining and blotch. Lower petals black blotch. Very large blooms.
-FIERY EMBERS—dark maroon. Upper petals bordered red. Lower petals red overlaid with black. Very different.
-GRAND SLAM—rosy red with slight salmon undertone. Lightly marked with purple lines. Red-brown spot on upper petals.
-HARRIETTE—dark crimson veined maroon. All petals overlaid deep violet at center. Edged with narrow lilac border.
-MASTERPIECE—strawberry. Large brown blotch on each petal and heavily veined. Very large flowers of rich coloring.
-VEL RAY—rich glistening red. Velvety black blotches surrounded by deep red on upper petals. Flower shines like changeable silk.

LAVENDER TO BLACKS

-BLACK PRINCE—truly a black. Very velvety. Shows a slight dark wine undertone edging each petal. Petals waved and curled.
-DUSKY GIRL—upper petals velvety purple. Lower petals clear lovely lavender.
-EMPRESS—dark purple, each petal bordered in white.
-IRIS—lavender. Upper petals have deep lavender blotches and veins. Large.
-PALO ALTO—light orchid with magenta veining and plum blotches on all petals.
-THUNDERCLOUD—dark purple. Ruffled petals with black blotches, lavender edges.

....total number of labeled plants from 2 1/2" pots @ .60 each.....\$.....

OR one each of all 26 kinds (list \$15.60) for.....13.00 \$.....

Trade allowance of 30% in Free Goods (3 free with 10) on orders for 30 or more plants.

....CHRISTMAS CACTUS—rooted cuttings @ .50 each.....\$.....

Same grower and can be shipped with above.

If ordered alone, minimum shipment is 6 for \$3.00.

CATTLEYA ORCHIDS

(PLANTS IN BUD)

A California firm of orchid hybridists and growers offers unnamed hybrids, now in bud again. These are the hybrids which missed being different enough to name.

"Cattleya hybrids of finest parentage, white with colored lip, minimum of five bulbs, established in 3 1/2" to 5" pots, in sheath and in bud."

Perfectly packed and shipped in the pot with cultural directions late in March, timed for Easter bloom. Nice gift item. Retail value \$10.00 up.

.... @ \$7.00 each, or three different hybrids for \$20.00.....\$.....

Hint On Buying Plants

Growers cannot tell in advance which varieties will sell best. They fill their benches with newer, improved kinds and start the season with a reasonable number of each.

Before long they get an order taking all of one kind. That may be a kind which you checked just to fill the minimum shipment. If so, your order must be held for new cuttings to root—while plenty of equally good varieties remain in the benches.

So we suggest that instead of forcing your selection to make the minimum, you check the varieties you want and leave the rest, if any, to the growers. This is very helpful to them in shipping promptly to you a well-rounded assortment of good plants.

PEONY ROOTS

(3-5 EYE DIVISIONS)

Herbaceous peonies are one of the best perennials in every way. Blooms are large and showy without coarseness, and of excellent cutting quality. Foliage is attractive from spring until fall. Plants are completely hardy and last a lifetime.

Peonies can be forced in the greenhouse for winter bloom. Clumps are dug in the fall, kept in a coldframe until needed, then in a 60 degree house will bloom in 6 to 8 weeks.

Qty	MINIMUM SHIPMENT FOUR ROOTS	
...	ALBERT CROUSSE—late; tall shell pink.	
...	AVALANCHE—late; splendid white of perfect form.	
...	BARONESS SCHROEDER—late mid-season; baby pink changing to pure white.	
...	EDULIS SUPERBA—early; old-rose pink; fragrant.	
...	FELIX CROUSSE—late mid-season; ruby red; large ball shape.	
...	FESTIVA MAXIMA—early; large white flaked carmine, fragrant.	
...	KARL ROSENFELD—early; finest pure deep red.	
...	LA PERLE—large, rose-pink flaked red; lavender overtone.	
...	MME. DeVERNEVILLE—early; white with crimson touches.	
...	MONS. JULES ELIE—early; gigantic satiny pink; fragrant.	
...	MONS. MARTIN CAHUZAC—early; deep glossy maroon.	
...	REINE HORTENSE—midseason; very large; rosy-pink with crisp fluffy petals.	
...	SARAH BERNHARDT—late; large; dark rose-red edged lighter.	
...	SOSHI—Japanese; crimson petals, yellow center.	
...	total, labeled 3-5 eye root divisions @ \$1.25 each	\$
...	OR one each of all 14 kinds (list \$17.50) for \$15.00	\$

TREE PEONIES

(FROM 5" POTS)

Long the favorite of Emperors of China, tree peonies adorned their gardens and in tubs graced their courtyards. Louis XIV had them in the gardens of Versailles; but they are a bit expensive for common use. How rarely we see one! On the grounds, or in tubs on the patio, they would be outstanding—something to admire and to show. A shrub rather than a tree, they attain a height of 5 to 6 feet and in time have 200 blooms to a plant. The flowers are like herbaceous peonies, refined and beautiful, but usually larger, sometimes 8 to 10 inches across. The plants are entirely hardy and longlived. Can be forced for winter bloom in the greenhouse.

These plants from 5" pots should bloom this year, certainly next. Shipped anytime. Complete cultural directions with shipment.

Qty		Each
...	ARGOSY—single flower of clear sulphur yellow with red blotch at base of petal. Flowers 5 to 7 inches across	7.00 \$
...	ATHLETE—large, double; mauve shaded rose	4.00
...	AUORE—single flowers on long stems, with broad petals of coppery terra-cotta	7.00
...	FLAMBEAU—fully double flower of bright salmon-red with amaranth veins	12.00
...	FLORA—immense enchantingly beautiful flower of pure white with violet-carmine throat	10.00
...	JULES PIRLOT—double, perfect globular form, satiny pink flushed carmine	4.00
...	LA LORRAINE—large flowers of sulphur yellow with salmon tinge	7.00
...	MME. DeVATRY—very large globular double bloom of satiny pink shaded lilac	4.00
...	REINE ELIZABETH—large perfectly shaped double flower of brilliant salmon-rose	4.00
...	SATIN ROUGE—double; unusual blood-orange	6.00
...	SOUVENIR DeDUCHER—large globular bloom of reddish violet with silvery overcast	4.00
...	SOUVENIR de MAXINE CORNU—plant of 3 to 4 feet high, flowers fully double of deep yellow heavily shaded orange-salmon. Fragrant	10.00
...	SURPRISE—large double blooms with irregular petals in straw yellow, pale salmon, and rosy purple. Fragrant	12.00
...	TRIOMPHE de VANDERMAELEN—large double, clear rose-purple	4.00

Total \$.....

CANNAS

(2-5 EYE ROOT DIVISIONS)

The summer evening band concert—the octagonal bandstand in the village park—and solid beds and borders of flaming cannas.

Cannas went out with surreys, but have since been hybridized and glorified into tones ranging from ivory and yellow through rose and apricot to rich scarlet. Both the bold tropical foliage in green and bronze, and the great heads of vivid color make this cousin of the banana a handsome plant for bedding and background.

Roots can be carried over the winter in the root cellar. These are 2 to 5 eye root divisions, each variety labeled, and shipped from Georgia until May first.

...	APRICOT—3' tall; rich apricot, green leaves.
...	CITY OF PORTLAND—3½' tall; pure pink with green leaves.
...	EUREKA—4½' tall; creamy white with green leaves.
...	HUNGARIA—3½' tall; La France rose-pink, green leaves.
...	KING HUMBERT—4' tall; Gold Medal winner, orange-scarlet, bronzy-red leaves.
...	KING MIDAS—4' tall; pure gold with green leaves.
...	MME. CROZY—3½' tall; very large crimson with yellow border, green leaves.
...	PRESIDENT—immense flaming scarlet, green leaves.
...	WYOMING—5½' tall; rich orange, stately purple-bronze leaves.
...	YELLOW KING HUMBERT—4' tall; deep rich yellow with crimson dots, green leaves.

...total, for Variety (any mixture, minimum of 10 roots) @ .30 each.....\$

...total, for Bedding (5 or more of a kind, minimum 25) @ .25 each.....\$

Rate per hundred on request.

EPIPHYLLUM—Orchid-Cactus

(8"-10" UNROOTED CUTTINGS)

This jungle jewel is well worth while to hobbyists for pots and hanging baskets. The plant is different with jointed, leathery leaves expelling gorgeous bursts of orchidaceous blooms.

We can practically guarantee 100% rooting. Some cuttings will bloom the first year. Older plants are prolific bloomers. Flowers are 2 to 10 inches across, long-lasting, and excellent corsage material. Cultural directions sent with shipment.

Qty	MINIMUM SHIPMENT \$4.00	Each
...	AMBER QUEEN—cherry red with orange stripe. Cup	.30 \$
...	BOHEMIENE—soft shell pink. Good corsage bloom	.30
...	COOPERI—species. White flowers at plant base	.50
...	POLAR BEAR—large white. Wide open flower	.50
...	ALICE CANFIELD—rose-pink overcast violet	.75
...	CAPRICE—rosy orange, cerise edges. Open cup	.75
...	FRED'K BUEL—dark carmine with orange stripe shading to lavender. White edges	.75
...	JORG SIEPKE—outer petals orchid-pink, inner white with lilac tips. Crepe textured	.75
...	ANTON GUNTHER—red and purple with pink on inner petals. Cup and saucer type	1.00
...	AUGUSTA VON ZOMBATHY—outer petals red, inner pink and orchid edged white. Good basket	1.00
...	DARKO—narrow dark red back petals, wide deep red inner petals with fuchsia throat	1.00
...	STANKA STOZIER—deep red-violet shading to lavender, orange center stripe. Large bloom	1.00
...	MAJESTY—orchid pink. Large flowers with crepe textured petals. Open cup shape	1.00
...	PRES. F. D. ROOSEVELT—extra large white with pink sepals. Crinkled texture	1.00
...	OR one each of all 14 above (list \$10.60) for	9.75

Last year our epiphyllum specialist acquired the private collection of an estate and we can now offer collectors a few cuttings of some of these rarer hybrids:

...	YELLOWWHITE—large wide open flower. Yellow outer petals, white inner petals	1.25
...	PAUL deLONGPRE—large blooms. Narrow deep-yellow outer petals, inner petals white center with yellow edges and tips	1.25
...	BROWN BEAR—large flowers of brownish gold	1.25
...	CATTLEA—orchid-like. Purple, orchid, white	1.25
...	ELEESA—large bell-shaped blooms of light rose with silver edged wavy petals	1.25
...	OSKAR STEUDETE—lacquered bronzed scarlet with violet pencillings at base. Wide open	1.25
...	SHASTA—all petals spiral. Pure white and almost transparent. Excellent corsage	1.25
...	BANDANA—beautiful shades of blood red and purple. Wide petals, open cup form	1.50
...	BELGIAN PFAU—outer petals deep orange, inner violet edged white. Fragrant. Wide open	1.50
...	NORTHERN LIGHTS—silvery-lavender heart deepening to rose tips. Back petals dark red	1.50
...	CLUMSHO—very narrow waxy scarlet petals, orange center. Medium size funnel shaped bloom	2.00
...	INDOXOL—rich deep glowing red. Very waxy saw-toothed petals. Large, wide open flowers	2.50
...	BLACKAMOOR—dark reddish purple. Large, round cupped flowers	2.50
...	OR one each of all 13 above (list \$20.25) for	18.50
...	CHRISTMAS CACTUS—rooted cuttings. Same grower	.50

Can be shipped with epiphyllum. If ordered alone, minimum shipment is 6 for \$3.00.

Total \$.....

STRAWBERRY PLANTS (Potted)

These plants have completely developed heavy root systems and planted early will bear fruit the first season. As a rough guide to your needs, figure 7 plants to a quart the first year and 1 square foot per plant. Shipped from pots in damp peat moss from early spring until fall. Minimum shipment 25 plants.

Shipped postpaid within Postal Zone 5 of New York. For shipment west of the Mississippi please add 2 cents per plant for part of the extra postage.

EARLY

...	DORSETT—fruit very sweet and pleasing to the taste.
...	SPARKLE—excellent for freezing.
...	FAIRFAX—large berries which hold their flavor and firmness.
...	TEMPLE—fruit is excellent flavor and suited for long distance shipping.

MIDSEASON

...	CATSKILL—large berries, fine flavor; most productive.
...	EDEN—a late introduction; a handsome berry and abundance of runners.
...	EMPIRE—another new one; tremendous yielder; fruit equal to Fairfax.
...	ROBINSON—fine commercial variety.

LATE

...	BIG JOE—fruit firm and handsome; one of the very best late varieties.
...	CHESAPEAKE—berries large, firm, glossy, and very delicious.

EVERBEARERS

...	GEM—an outstanding and very popular variety.
...	STREAMLINER—berries fine for eating fresh, canning, or freezing.

...	total number of plants priced @ 25 for	4.75 \$
...	@ 50 for	8.25 \$
...	@ 100 for	14.75 \$

AFRICAN VIOLETS

(ROOTED PLANTLETS)

Here we have a new list of recent introductions, and time-tested favorites; in extreme range of color, flower form, and leaf.

The labeled rooted cuttings, with 5 to 6 new leaves started, are enclosed in a little pack of mud and vermiculite, wrapped in waxed paper, and shipped in a carton by parcel post "Special Handling." We guarantee to deliver good plants in good condition. Cultural directions go with each shipment and all plants should grow. Shipped until hot weather. This list cancels all previous lists.

Qty MINIMUM SHIPMENT \$3.50

- ...AMENIENSIS—a species. Small crisp light green leaves. Small clear blue bloom.
- ...AZURE BEAUTY—light green fluted foliage. Flower blue and white fluff.
- ...BLUE HEIRESS—strong DuPont foliage. Flowers very large and electric blue.
- ...BLUE DUCHESS—old and good. Quilted foliage. Flowers double and dark purple.
- ...DOUBLE GIRL—girl foliage. Deep blue, double blooms.
- ...DOUBLE SNOW—glossy, pointed, grass green leaves. Semi-double white flowers.
- ...ECLIPSE—light green foliage. Deep orchid bloom with sugar-white edge.
- ...FLUFFY LADY—girl foliage. Ballet skirt blooms in white, touched purple.
- ...GROTEL—another species. This makes a handsome hanging basket violet.
- ...GYPSY—round leaves with rose coloring. Flower nice claret red.
- ...HOLLY (blue holly)—wavy, tooth-edged, black-green leaves; solid powder blue flower.
- ...INNOCENCE—tawny foliage underflushed wine-red; clear white flower.
- ...LAVENDER BEAUTY—once you own one you will always want one. Good strong foliage with lavender blossoms as large as half-dollars.
- ...MENTOR BOY—always good. A terrific bloomer. Blooms are deep purple-violet.
- ...NANCY CARR—a Roseanna. Deeply quilted foliage, very double lavender bloom.
- ...PAINTED LADY—as pretty as stick candy. Good girl foliage. Blossoms in shades of wine-red and white.
- ...PINK CHEER—excellent pink and a good grower.
- ...PINK GIRL—ladylike plant with flowers in clusters high above foliage.
- ...PINK WONDER—a new pink; DuPont leaves. Blossoms are a lovely soft pink.
- ...PURPLE LACE—large DuPont foliage deep grass-green with light green ribs. Flower is black purple with fringed edge.
- ...RED KING—still one of the best "reds."
- ...ROSEANNA CREOLE—deeply scalloped and swirled foliage. Double blue bloom.
- ...ROSE RAINBOW—Rose and white double bloom; light green leaves.
- ...ROYAL GIRL—electric blue flowers high above bright green foliage.
- ...ROYAL SCOT—orchid blend double blossom. Medium green foliage.
- ...RUFFLED QUEEN—large DuPont foliage. Deep orchid bloom with lighter fringe.
- ...RUFFLED TREASURE—one of the new "sweet pea" blooms. Deep green foliage with red underside. Bloom is orchid and slightly ruffled.
- ...SAILORS DELIGHT—pointed girl foliage with double bright blue blossoms.
- ...SAILOR GIRL—same as Sailors Delight except that bloom is single.
- ...SHOCKING PINK—just that! Good light green foliage.
- ...SILVER LINING—a new one. Deep blue double bloom with sparkling white edge.
- ...SNOW PRINCE—large white blooms in clusters and strong light green foliage.
- ...STAR GIRL—some of the very best girl foliage. Blossoms are powder blue on white, often forming five-pointed star.
- ...TONGWENSIS—a species. Long, hairy, pointed leaves with pale blue blooms which grow in a crown on top of plant.
- ...VELVET GIRL—breath-taking beauty. The bloom is a deep two-toned orchid pansy.
- ...WHITE MADONNA—heavily quilted foliage and large double pure white blooms.
- ...GROWER'S CHOICE—all different, to round out assortment.

...total number of labeled plantlets @ .35 each.....\$

OR one each of all 36 varieties (list \$12.60) for.....10.60 \$

Trade allowance to retail growers of 30% in Free Goods on orders for 20 or more, with minimum of 5 of a kind.

An Accessory Worth Having For Your Propagating Bed

GENERAL ELECTRIC SOIL HEATING CABLE SET (retail 17.00)

30 ft. lead covered cable and HSC-4 thermostat.....15.00 \$.....

Extra 30 ft. cables (thermostat can control six) each 6.50 \$.....

FUCHSIAS (rooted cuttings)

An old time favorite in striking colors of purple, crimson, pink and white; fuchsias are worth growing as a special hobby. They make showy pot plants and unusual hanging baskets; also interesting tub plants for the patio grown to straight 3 foot trunks supporting umbrellas of handsome pendant "eardrops."

Qty MINIMUM SHIPMENT \$3.50

- ...BLACK PRINCE—single; corolla crimson, sepals dark crimson.
- ...CHANG—small single flowers; corolla and sepals vivid orange with inside of petals almost white.
- ...FASCINATION—very double; corolla soft pink flushed deeper pink, sepals deep pink.
- ...GIANT PINK—very full double; corolla red, sepals pink.
- ...LAVENDER BEAUTY—double; corolla crimson, sepals lavender.
- ...LUCKY STRIKE—double; inside petals solid blue-purple, outer petals pink with purple marks, sepals ivory white.
- ...PINK PEARL—single; corolla crimson, sepals clear pink.
- ...PRIDE OF ORION—double; corolla white veined pink, sepals fiery crimson. Large blooms.
- ...TROPHEE—semi-double; corolla violet-blue, sepals waxy white.
- ...WINSTON CHURCHILL—double; corolla beautiful bluish pink, sepals rose-pink; prolific medium sized blooms.

...total number of labeled rooted cuttings @ .35 each.....\$

Trade Allowance of 30% in Free Goods on orders for \$10. or more

CHRYSANTHEMUMS

(ROOTED CUTTINGS OF GREENHOUSE VARIETIES)

Down in southern California we have a chrysanthemum enthusiast with a wide range of greenhouse varieties. Most of these bloom too late for northern gardens, and many are not hardy. Plant them in the field when received, lift the clumps in the fall, and pot for winter bloom in the greenhouse. Shipped by parcel post Special Handling, until hot weather. Minimum shipment \$3.50.

Qty LARGE FLOWERING Bloom Date

- ...APRICOT MAY WALLACE—incurve; pastel shade of apricot.....11-15
- ...GRAND DUCHESS—incurve; orchid.....10-20
- ...GREER GARSON—reflex; good sized pink.....10-25
- ...BLACK HAWK—reflex; dark red.....10-25
- ...MAJOR BONNIFON—incurve; late yellow.....11-15
- ...GARNET KING—true reflex; garnet red.....11-20
- ...GOOD GRACIOUS—incurve; large subdued yellow.....11-15
- ...SILVER WEDDING—tall reflex; snowy white.....11-1
- ...SOUTH HAMPTON—yellow, exhibition type.....11-1

SPIDERS AND SPOONS

- ...MARELYN—dwarf, spider type. Old rose and lavender.....10-5
- ...GENA HARWOOD—tall spider; rosy mauve.....10-15
- ...GOLDEN WONDER—golden yellow spider.....11-1
- ...BRONZE CHIEF—bronze spider. Very strong stems.....11-20
- ...ZELMA, (1954 intro.)—spider; deep amaranth rose.....11-5
- ...MRS. V. MOOD—pink spider.....11-1
- ...EMERALD ISLE—thread-like spider, uranium green.....11-1
- ...PEGGY ANN HOOVER—light, delicate pink spider.....11-5
- ...JEAN SQUIRE—deep rose-pink spider.....11-1
- ...ORANGE SPOON—deep yellow orange spoon.....10-5
- ...WHITE SPOON—pure white spoon.....10-5

POMPONS, BUTTONS AND ODDS

- ...SAMOVAR—decorative pompon; intermediate bronze.....11-10
- ...BLUE BLOOD—large pompon; deep amaranth.....10-10
- ...LINDA LOU—popular deep rose-pink; decorative pompon.....10-5
- ...DR. ADAH RUTH TAYLOR—soft, clear, exquisite pink.....11-1
- ...MRS. GIBBS—anemone; white rays, full yellow center.....11-10
- ...BONNIBEL—button; lovely shade of warm bronze.....10-25
- ...CHESTNUT—bronze button.....11-1
- ...GOLD NUGGET—golden yellow button.....11-1
- ...COPPERHEAD—large coppery-bronze button.....11-10
- ...ANNETTA—smokey pink button. Perfect balls.....11-1
- ...CLARE—white, baby button. Very prolific.....11-15
- ...ANN FULTON—clear pink button.....10-25
- ...MRS. H. J. BALLAUGH—very prolific yellow cushion.....10-10
- ...ROSALIND—single; medium pink.....12-20
- ...GROWER'S CHOICE—all different, to round out assortment.

...total number of labeled rooted cuttings @ .35 each.....\$

OR one each of all 34 varieties (list \$11.90) for.....9.50 \$

Trade Allowance of 30% in Free Goods on orders for 20 or more, with minimum of 5 of a kind.

GLADIOLUS (corms)

Our gladiolus grower entered six eastern state shows in 1954 and won one Grand Championship, 13 Section Champs, 97 blue ribbons, and a total of 150 ribbons. His corms are not commercially graded. Smaller varieties run from 1 1/4" up. The majority are 1 1/2" up, including Jumbos. All are full blooming size. Of his show stock he has surplus corms of the following varieties:

Minimum of a kind 5 corms. Each variety labeled.

Minimum shipment 25 corms. Shipped until April 15.

Qty

- ...BIRCH RED—large pure deep red. Vigorous grower.
- ...BLUE BEAUTY—one of the best of the blues. Tall strong grower.
- ...BOUTON D'OR—very deep yellow ruffled blossoms on a tall spike.
- ...BUCKEYE BRONZE—an outstanding bronze with orange shading.
- ...BURMA—a very deep rose-red with heavily ruffled florets.
- ...CONN. YANKEE—beautiful light blush-pink with rose throat. Tall.
- ...DAISY MAE—lovely orange-pink with cherry throat blotch. Tall.
- ...DIEPPE—deep salmon-red with darker throat.
- ...ELIZABETH THE QUEEN—beautiful lavender with large ruffled florets.
- ...EVANGELINE—huge pale pink ruffled florets. Won 3 Grand Champs in '54.
- ...FLORENCE NIGHTINGALE—glistening white, large slightly ruffled florets.
- ...GENERAL EISENHOWER—brilliant begonia-rose, very large florets. Tall.
- ...GOLDEN ARROW—clear light yellow, large florets. Grows up to 5' tall.
- ...LILA WALLACE—deep rose red, nicely ruffled.
- ...MANCHU—very tall, contrasting orange and yellow.
- ...MID-AMERICA—huge deep red florets. Flower head up to 36" long.
- ...ORANGE GOLD—wonderful golden orange with large florets on tall spike.
- ...PARTHENIA—striking deep mauve-lavender, ruffled and fluted florets.
- ...PATROL—lovely apricot with yellow throat. Tall grower.
- ...PHARAOH—light salmon-pink with slight throat markings, large florets.
- ...POLYNESIA—deep salmon with yellow throat and deep salmon blotch.
- ...SALMANS GLORY—huge light cream with carmine throat blotch.
- ...SHERWOOD—beautiful rich reddish purple with ruffled florets.
- ...SPIC AND SPAN—tall ruffled pink. Has won many championship awards.
- ...VENIDA—rose shaded lavender with cream throat. Tall grower.
- ...WHITE GODDESS—creamy white, heavily ruffled florets on tall spike.

...total number of corms @ 25 for \$2.75 (extras, 5 for .55).....\$

50 for 5.25.....\$

100 for 9.50.....\$

OR one each of all 26, in a box with descriptive list, for \$3.00.....\$